

# Alaska Department of Fish and Game

Habitat Section  
Southeast Region



## 106-22-10080 Tributary 2

## ADDITION

**Water body name:**

**Quad:** Petersburg A-2

**Upper Reach Latitude:** 56.167567 **Longitude:** -132.571680

**Lower Reach Latitude:** 56.166115 **Longitude:** -132.574945

**Survey date:** 8/27/2025

**Species & Lifestage:**

**Survey crew:** NJ, DK

**Findings:** We surveyed this uncataloged stream up to an anadromous fish barrier using a backpack electrofisher and GPS and captured juvenile coho salmon. The barrier is an 8 ft bedrock waterfall with no jump pool at its base, and a bedrock chute flowing downstream from there; this constitutes a permanent rock barrier. Below this, the channel becomes about 6 ft wide with primarily cobble and boulder substrate and provides ample rearing habitat for juvenile fish (Table 1; Figures 1–3).

**Recommendations:** Add this uncataloged stream to the anadromous waters catalog up to waypoint 1043 for rearing coho salmon and add a barrier point at waypoint 1043 (Figure 4).

**Nomination:** Pending

Table 1.–106-22-10080 Tributary 2 survey data.

Waypoint	Latitude	Longitude	Notes	Stream Width ft	Stream Substrate	Habitat Features	Gradient %	Sample Effort	Sample Results
1039	56.168654	-132.567681	Low gradient, beaver pond complex. Appears to channelize further downstream on the map. Also fine organics and some gravel.		Fine Organic	Beaver Pond	0-1	EF	No Fish
1042	56.168399	-132.570344	Bedrock stream with some gravels and good flow. Several pools present and some debris, is incised approximately 3 feet. No fish seen at this point so far.	6-8	Bedrock		1-2	EF	No Fish
1043	56.167569	-132.57198	Fish barrier found in bedrock incised channel. Barriers approximately 8 feet tall bedrock cliff. Bedrock shoot continues downstream, channel approximately 6 feet wide downstream with lots of cobbles and boulders.	6-8	Bedrock		2-4	EF	2 CO
1044	56.166919	-132.573152	Channel continues with shallow bedrock and some pools. No adult fish observed.	6-8	Bedrock		1-2	VI	10 CO



Figure 1.–Juvenile coho salmon caught at waypoint 1043.



Figure 2.– Bedrock falls barrier at waypoint 1043.



Figure 3.– Channel at waypoint 1044.

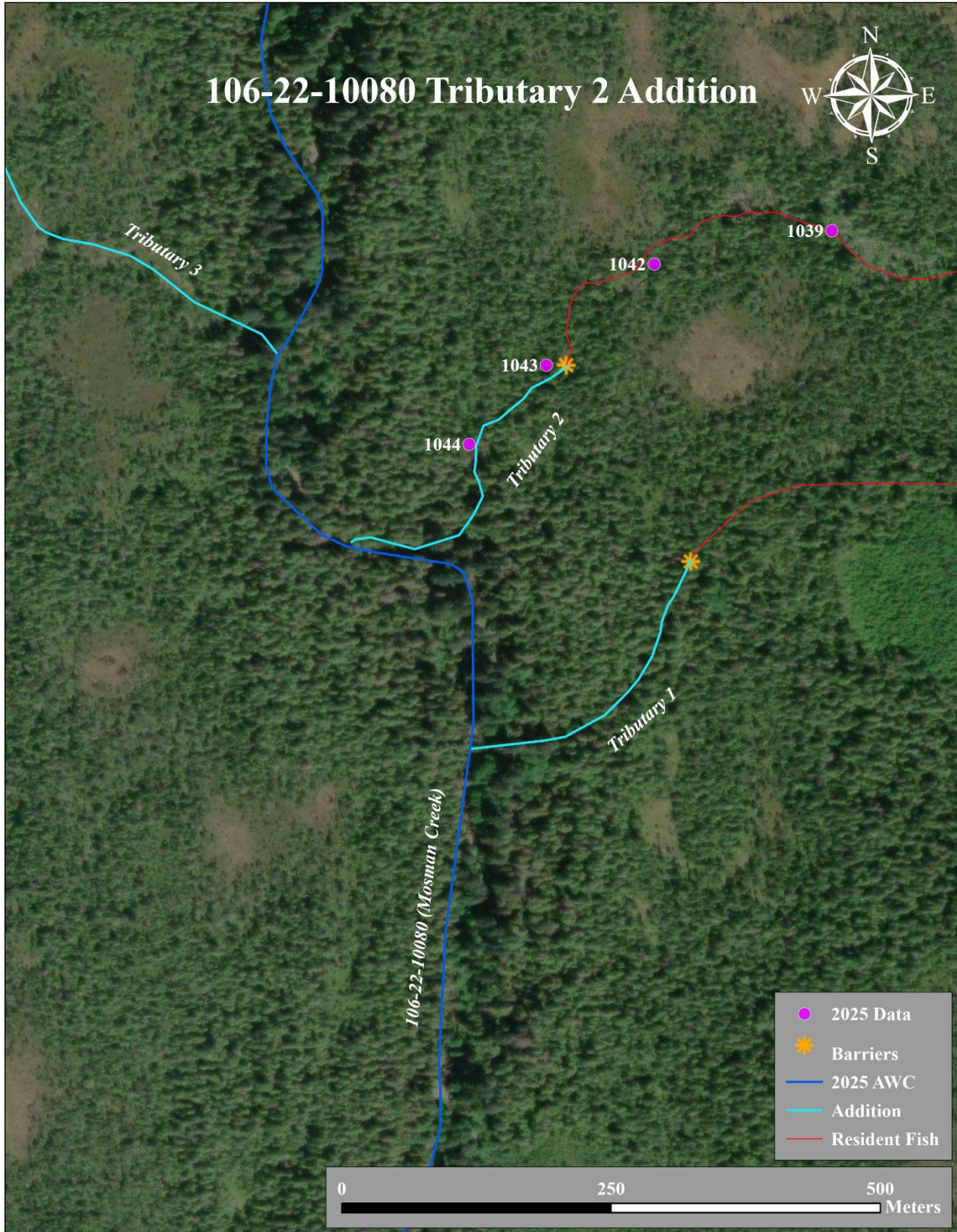


Figure 4.—106-22-10080 Tributary 2 Addition map.